



# Underwood Discovery Centre



Higher farm is organically farmed by Michael Rogers, who is the third generation in his family to be a farmer. His grandfather first rented the 45 acre farm in the late 1800s, followed by his father in 1939, building up to 72 acres. Michael has been running the farm since 1975.

The farm is now 160 acres, overlooking Start Bay, it runs from 100 meters above sea level stretching down to the sea at

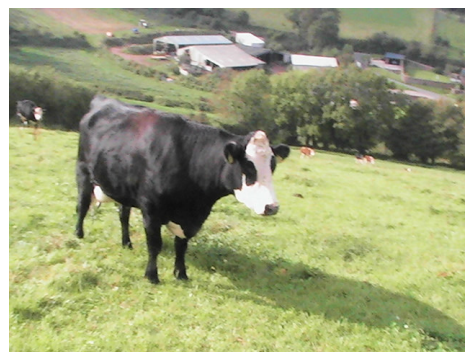
Beesands.

## Animals on Higher Farm

### Cows

We currently have about 60 cattle on the farm:

**20 Hereford suckler cows** – these are kept to produce calves. The calves are then raised to produce beef to eat. The calves stay with their mums for 9 to 10 months growing naturally with the cows grazing the nature rich grassland. At the moment there are 35 growing animals, some heifer (female) calves will stay to replace the suckler cows, the rest will go to market as beef.



**6 Dexter cows** – a small hardy UK breed which stay outside year round. They only need extra food, silage or barley, in particularly rough weather. Produce beef of very high quality but with small joints.

## Sheep are also kept as part of UDC.



7 Manx ewes and their lambs – small, hardy, native sheep, kept to show how they are sustainable.

3 other ewes - 2 Lleyn crosses which are 'commercial' lamb producers – to be raised to go to slaughter.

1 Gotland which is a specialist wool producer.

## Vegetable and Cereal growing

We have a 7 year Crop rotation

3 years of clover/grass to build fertility.



2 crops of vegetables e.g. early potatoes followed by cauliflowers.



Cereals – a crop of barley which we harvest and sell for animal feed.



Oats – which are fed to the sheep and cattle, with some more clover/grass

The other crops being grown on the farm include: carrots, peas and beans, sweet corn, squash, lettuce, swedes, purple sprouting broccoli and brussel sprouts.

Polly tunnel crops include: melon, aubergine, peppers and tomatoes.

Higher Farm has been in a Countryside Stewardship Scheme since 1995 and we give farm walks, free of charge, to as many diverse groups in the area as we can.

Most of our walks are given to local Primary schools plus, secondary schools and further education groups from Slapton Field Centre. We also host walks on behalf of the AONB, RSPB or any other interested group which wishes to further their environmental awareness. We currently have authorisation to host up to 70 walks a year. We also visit schools when requested, if it is more convenient.

The Underwood Discovery Centre (UDC) is an educational experience based in a converted barn on the farm. Our aim is to demonstrate how to farm and live in a sustainable manner whilst reducing our carbon footprint. To develop the centre we have used recyclable materials such as metal, bricks, timber, crushed concrete, paper and sustainable materials such as straw, stone, timber, cob, willow and wool. We only use renewable energy at UDC, produced by our solar panels, photovoltaic cells, wood burner and wind turbine.

Please visit our website at [www.underwooddiscoverycentre.com](http://www.underwooddiscoverycentre.com)

Address: Underwood, Beeson, Kingsbridge, Devon, TQ7 2HW

Phone Number: 01548 580165

