



Porfell WILDLIFE PARK & SANCTUARY

Oct 2010

Porfell Wildlife Park and Sanctuary

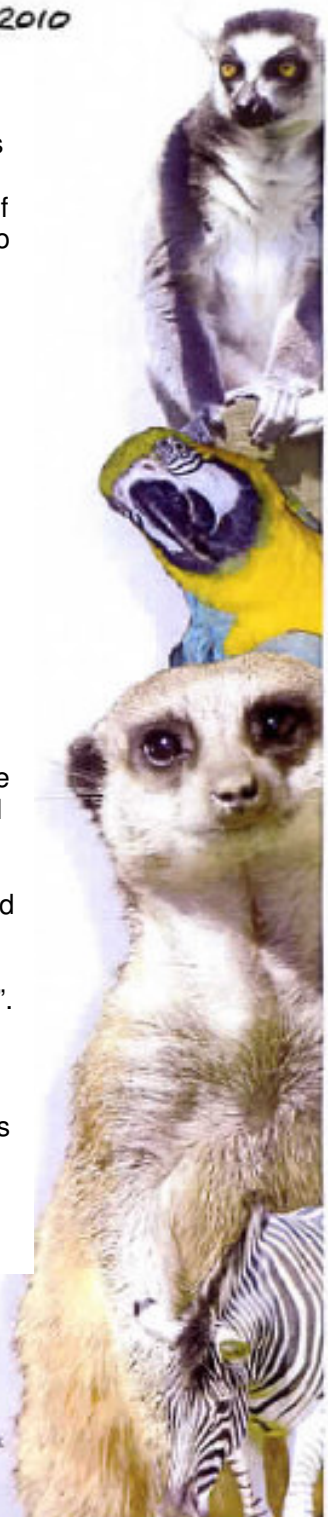
At Porfell Wildlife Park we care for animals from around the world and this is born from our love of animals and a desire to embrace all things to do with the natural world. We have forty eight species that require a variety of different habitats and diets. Alongside the care of animals, we also seek to inform educate and promote a greater understanding and respect for the environment, animals, culture and conservation.

Porfell has a mixture of domestic and exotic animals with open grassland and woodland. Visitors can enjoy and experience special moments of interaction with some of our planet's amazing creatures. They can also stop and look closely at trees and plants in our ancient woodland. With a trail guide to help there is much to learn about the flora and fauna, stimulating a desire to understand and enjoy more wonders of nature.

The sanctuary has a commitment to give a 'Home for Life' to exotic animals and to promote a greater awareness and responsibility for the environment and conservation. Throughout the park there are clear messages and descriptions with information and we also give demonstrations and workshops.

Porfell is always changing and developing. Following our visit to Kenya we were inspired to create a themed area in the space where we already had a zebra. This is because we fell in love with Kenya, its wildlife, landscape and people. While there, we saw an opportunity to pursue our ambition to introduce a unique dimension on our park showing the co-existence of wild animals and people.

As a result we designed and built the "African plains and a Maasai village". Here one gets an impression of entering a real village in the middle of the plains surrounded by wild animals, which in this case include an ostrich, an eland and a porcupine. Within the huts, visitors can see and learn about the wonderful landscape of the Kenyan plains and the culture, crafts and music of her people.





PORFELL WILDLIFE PARK & SANCTUARY

Oct 2010

This venture is now a foundation for introducing new initiatives including what we are about to do with Send a Cow to grow an African garden. We came across the Send a Cow organisation while researching for the content of the African Plains and village. Before this though, we were already keenly aware of the poverty and hopelessness of some societies and have supported where we could. However we sometimes were concerned that our donations might not be used properly.

We now hope that visitors to our park will recognise and support, as we do, the benefits of supporting poor African families through Send a Cow which ensures a real difference out of poverty for the families they work with.

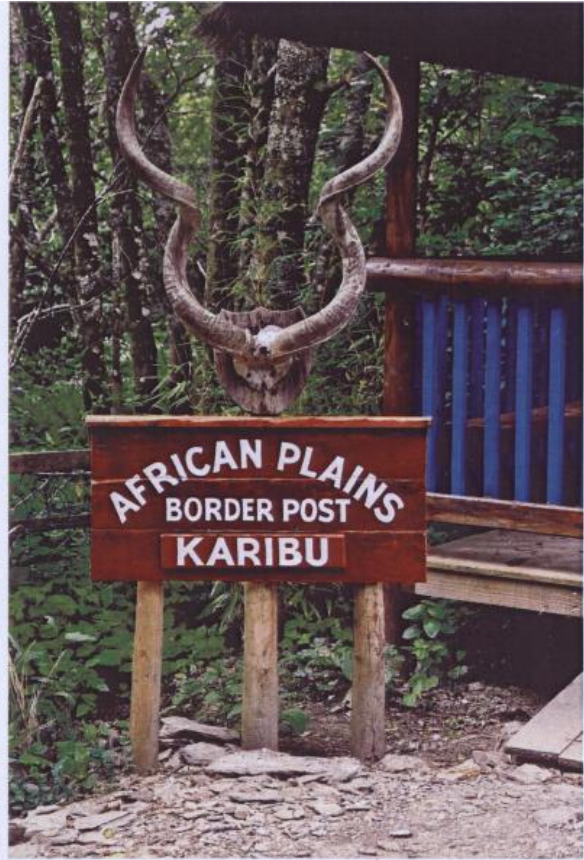
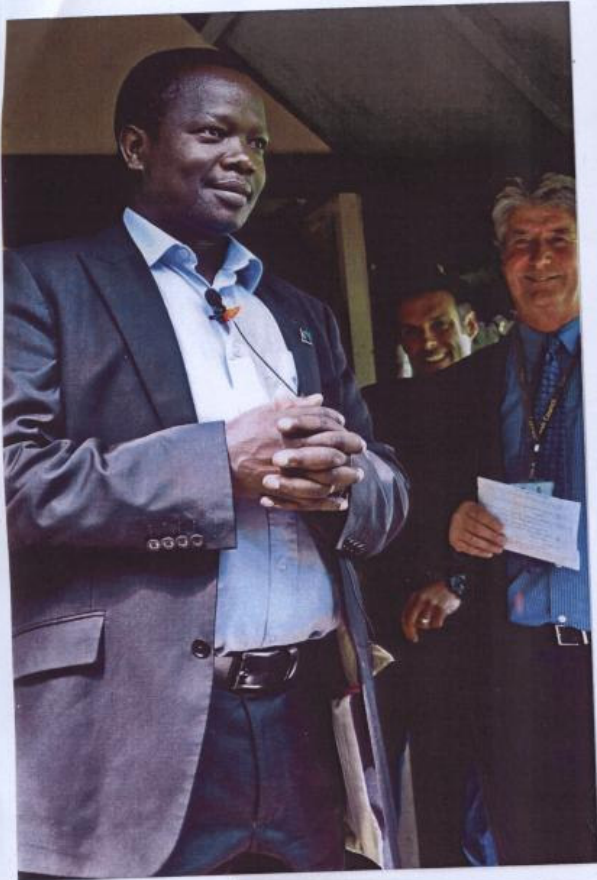
The Grow it Global African garden will be in the form of a 'shamba' (Swahili word for garden or farm) in the African village and local residents will help with its establishment. We also plan to have a replica corrugated hut which would provide shelter for pupils during school visits.

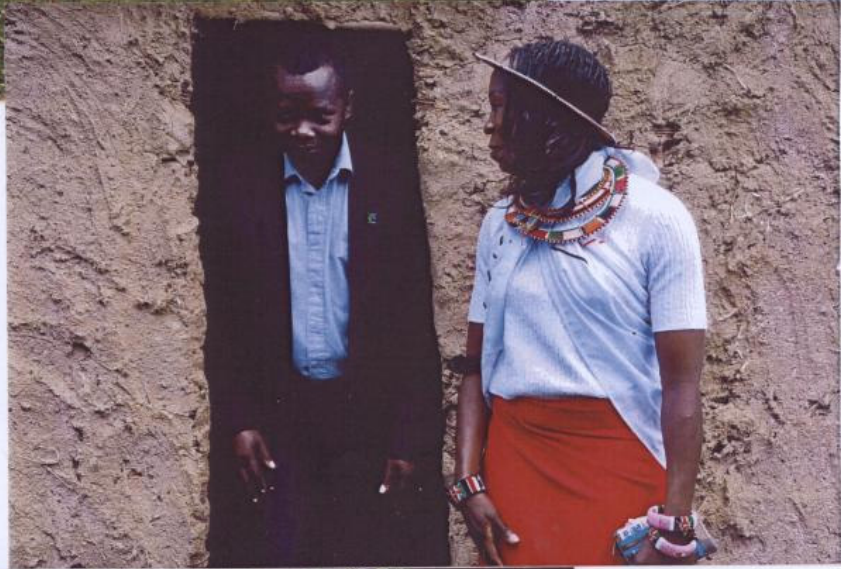
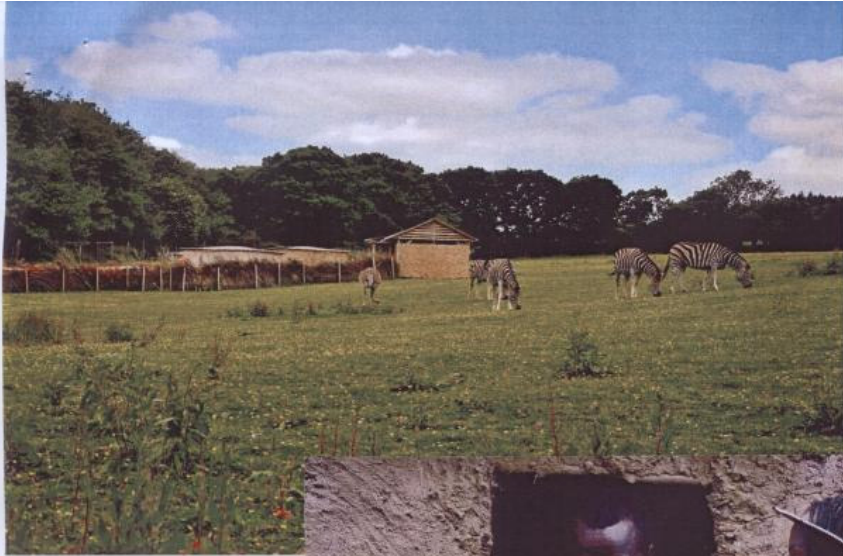
We have accommodation in our home to host the Ugandan farmer and there is also a class room for studies and talks.

Porfell has a rich diversity of indigenous flora and fauna covering 20 acres with wheelchair accessible viewing areas. The entrance and facilities are situated on the high ground of the park with paths running down through corridors of trees to the ancient woodland. There are gravel paths and raised board walks, which also link the GiG African garden with the African Plains.

There is a large car park that is suitable for coaches.

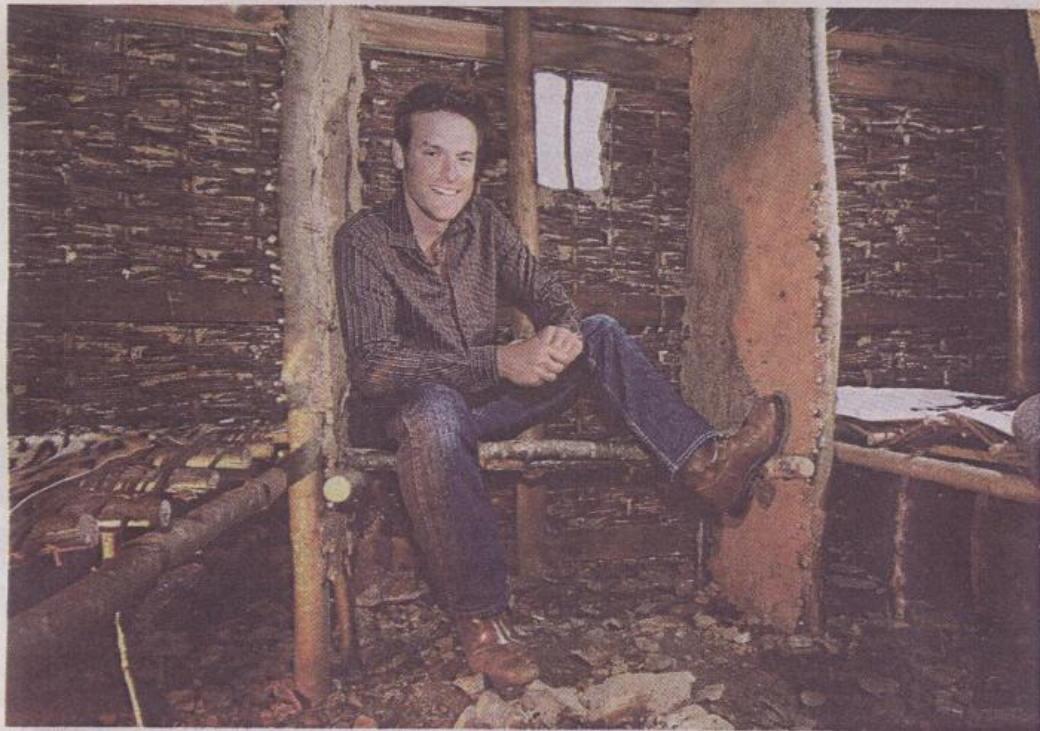








8 FRIDAY JULY 16 2010 WESTERN MORNING NEWS



Nick Baker at the opening of the African Maasai village at Porfell Wildlife Sanctuary, near Liskeard. Nick is pictured inside one of the Maasai huts

Nature expert helps bring Africa to our doorsteps

BY JACK HÜDAVERDI

Porfell Wildlife Sanctuary celebrated the successful completion of its new African Maasai village yesterday with the help of nature expert TV Nick Baker — and representatives of the area it is replicating.

The wildlife park near Liskeard has created a near perfect replica of a Maasai village which includes mud huts, a safari camp and an African Plains area.

Mr Baker joined the park's owners and a group from the Kenyan Embassy in London

who made the journey down to attend the grand opening.

Mr Baker, who lives on Dartmoor, said: "It's a really exciting project, unique to the South West. I can't wait to see how people react."

The idea for the new attraction came about after the own-

er of the park, John Palmer, had been on a visit to Africa.

He said: "We wanted to demonstrate the amazing co-existence of animal and human."

Yesterday, visitors were given a special passport to enter the African Adventure area.